



# MONTHLY MEMBERSHIP PROGRESS REPORT

District 7 N

Results as of: 6/30/2015

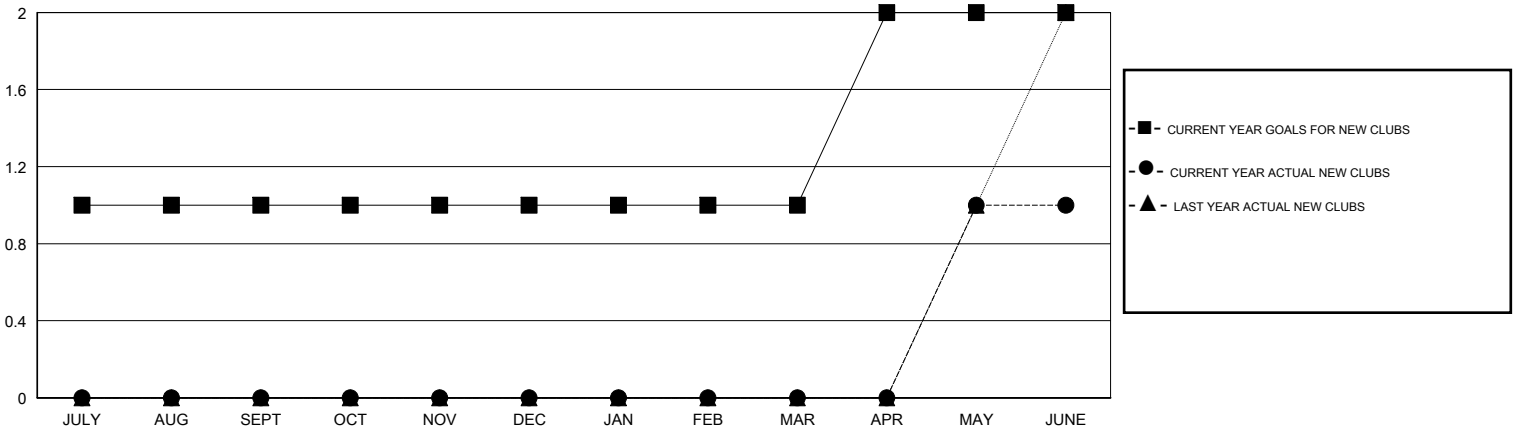
GMT: HAL GRIFFIN

LOCATION ARKANSAS

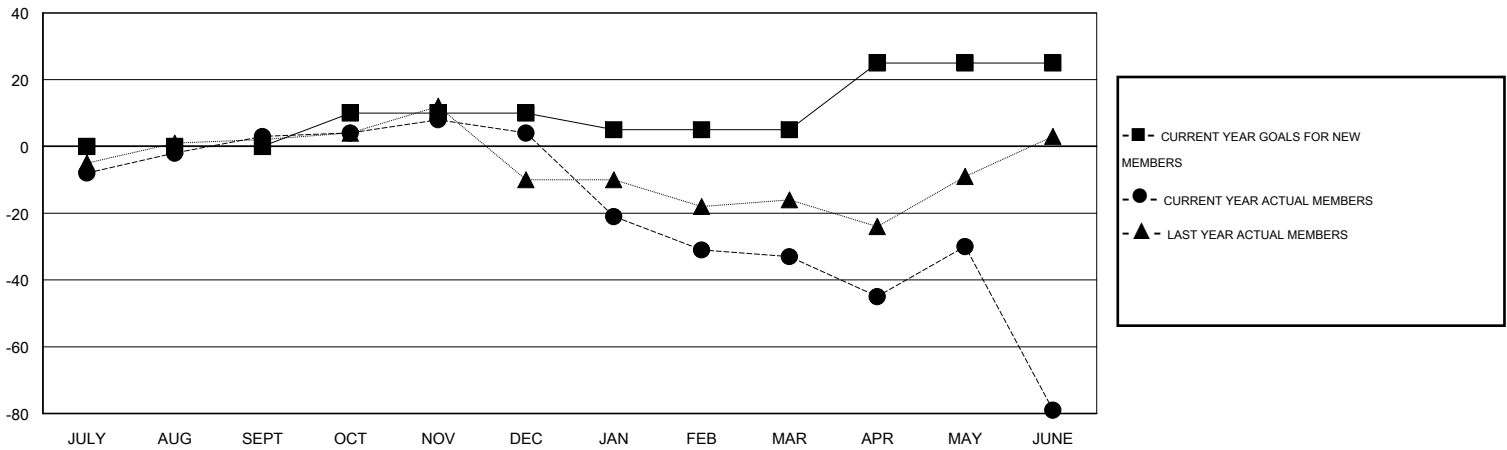
GMT CA 1

Clubs					Members				
RESULTS FOR 2014-2015					RESULTS FOR 2014-2015				
QUARTER	NEW CLUB GOAL	NEW CLUBS	DROPPED CLUBS	NET GAIN/LOSS	QUARTER	NEW MEMBER GOAL	CHARTER AND NEW MEMBERS ADDED	DROPPED MEMBERS	NET GAIN/LOSS
JULY/AUG/SEPT	1	0	0	0	JULY/AUG/SEPT	0	37	34	3
OCT/NOV/DEC	0	0	0	0	OCT/NOV/DEC	10	10	9	1
JAN/FEB/MAR	0	0	1	-1	JAN/FEB/MAR	-5	9	46	-37
APR/MAY/JUNE	1	1	2	-1	APR/MAY/JUNE	20	39	85	-46

GOALS AND ACTUAL NEW CLUBS CUMULATIVE



GOALS AND ACTUAL MEMBERS CUMULATIVE



DROPPED CLUBS: 3	22 CLUBS OF 39 ADDED 1 OR MORE NEW MEMBERS	<u>GENDER DISTRIBUTION</u>	
		MALE	467 (63.28%)
<u>DROPPED MEMBERS</u>	<a href="#">CLICK HERE FOR HEALTH ASSESSMENT DATA</a>	FEMALE	271 (36.72%)
DECEASED		10	FAMILY UNIT MEMBERS
CLUB CANCELLED	16	HEAD OF HOUSEHOLD	65
OTHER	148	NON-HEAD OF HOUSEHOLD	65
<b>TOTAL</b>	<b>174</b>		